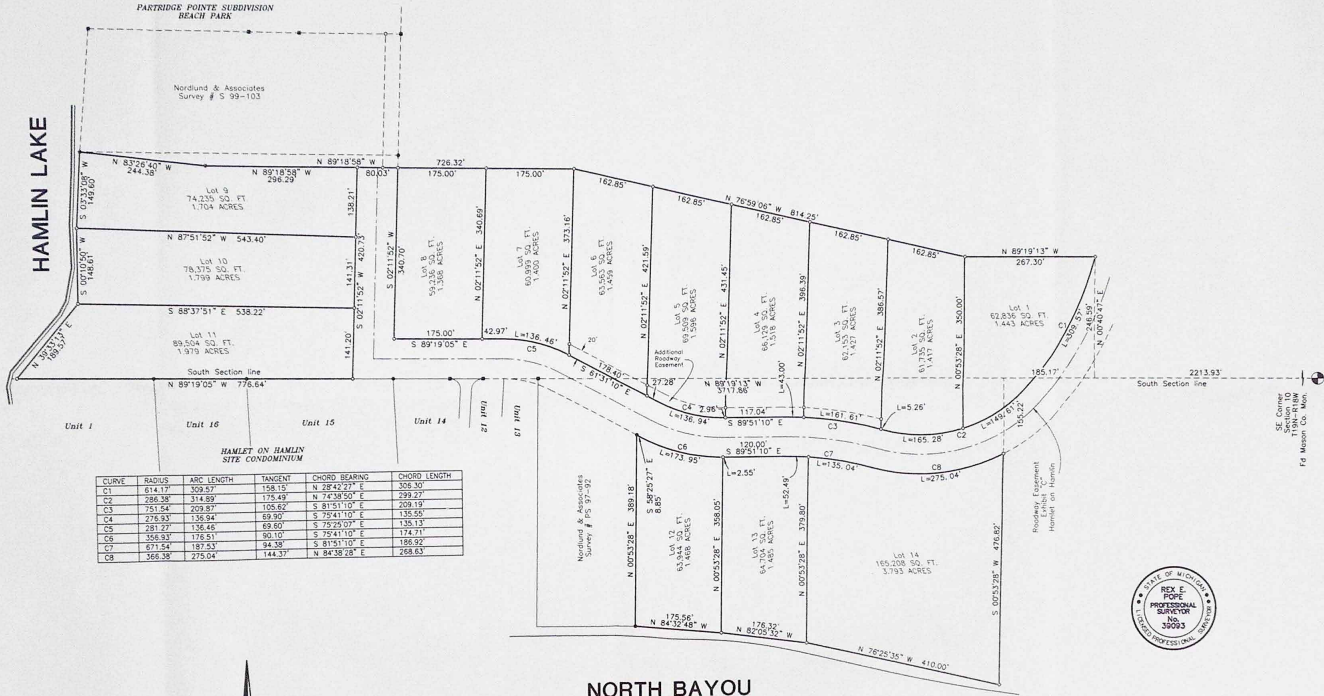


HAMLIN LAKE



CURVE	RADIUS	ARC LENGTH	TANGENT	CHORD BEARING	CHORD LENGTH
D1	614.17	509.57	158.15	N 28°42'27" E	306.30
D2	298.38	244.89	175.49	N 74°38'50" E	292.27
D3	151.54	209.87	105.62	S 81°51'10" E	209.19
D4	276.93	136.94	89.90	S 79°41'10" E	135.85
C5	281.27	136.45	69.60	S 75°25'07" E	135.13
D6	355.93	176.51	80.10	S 79°41'10" E	174.77
D7	271.54	187.53	94.38	S 81°51'10" E	186.92
D8	265.38	275.04	144.37	N 84°58'28" E	268.63

NORTH BAYOU
HAMLIN LAKE



R. Pope 2-15-10
 Rex E. Pope PS #339093 Date