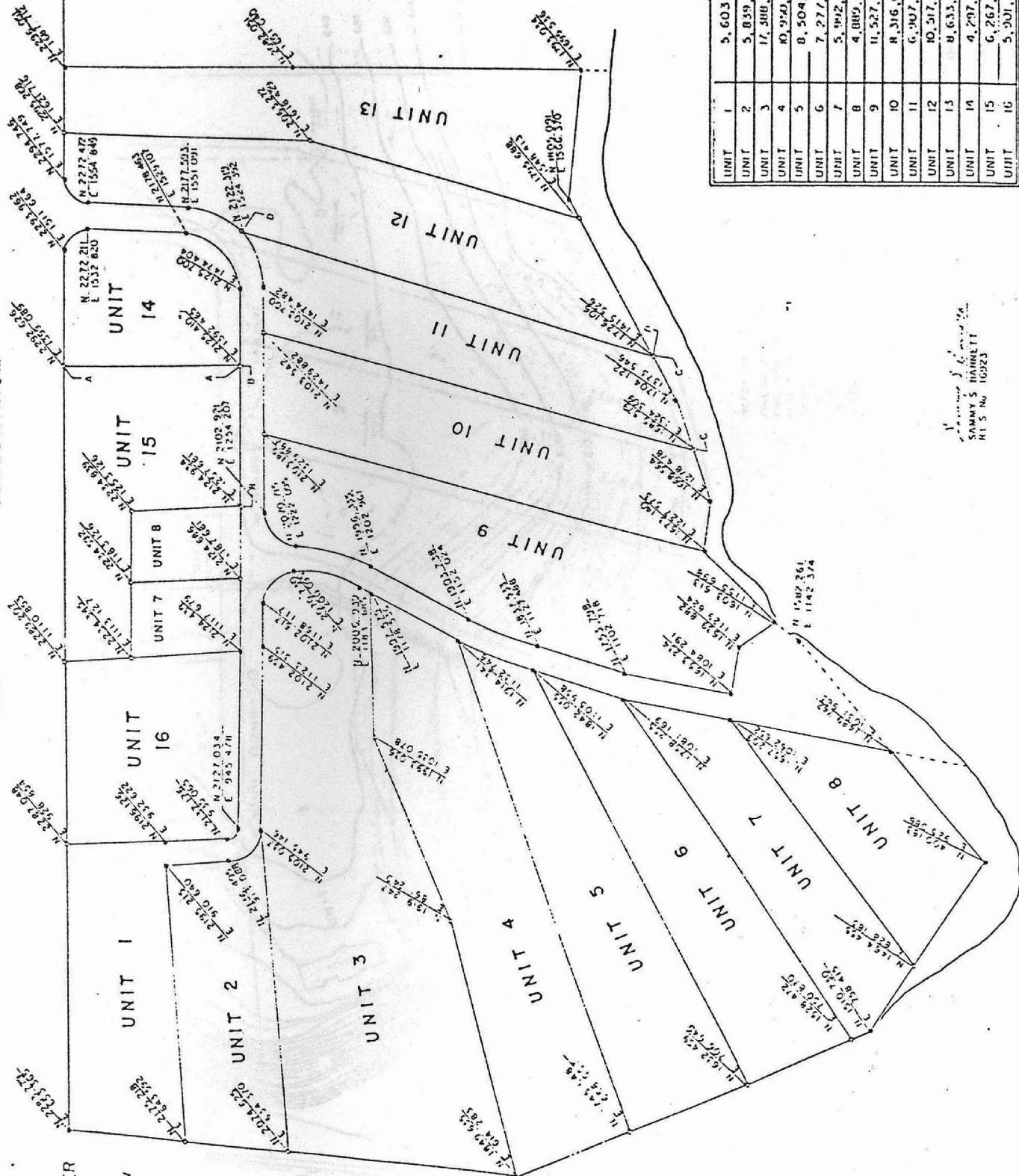


# HAMLET ON HAMLIN LAKE

CONDOMINIUM SITE

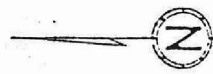


UNIT	CU FT
UNIT 1	5,603,769.00
UNIT 2	5,859,400.00
UNIT 3	17,388,200.00
UNIT 4	80,950,600.00
UNIT 5	8,504,900.00
UNIT 6	7,277,397.00
UNIT 7	5,942,100.00
UNIT 8	4,885,800.00
UNIT 9	11,527,800.00
UNIT 10	8,316,000.00
UNIT 11	6,907,020.00
UNIT 12	10,517,900.00
UNIT 13	8,633,400.00
UNIT 14	4,297,100.00
UNIT 15	6,267,000.00
UNIT 16	5,901,000.00

SITE PLAN

CONDOMINIUM DEVELOPER  
 CHUCK SMITH  
 C AND J REALTY AND  
 DEVELOPMENT CORPORATION  
 A MICHIGAN CORPORATION

SURVEYOR  
 HARNETT SURVEYING INC  
 274 S BRANCH RD  
 BRANCH, MI 49302



NOTE  
 ALL WATERFRONT UNITS EXTEND  
 TO THE WATERS EDGE

BY  
 SAMMY S. HARNETT  
 M.S. No. 16282